

# SPEAKER SYSTEM ACCESSORIES

## CH-2017P

Code No: 202-20161

Material: Plastic

Finish: Matt black

Logo/Narreplate space:

68mmx16mmx2.7mm

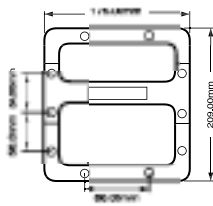
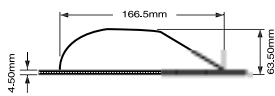
Packaging: 24 pcs/carton

Packing Dimension:

470mmx400mmx345mm

18.5inx15.8inx13.5in

Weight: 7 Kg/24 pcs



## CP-75105

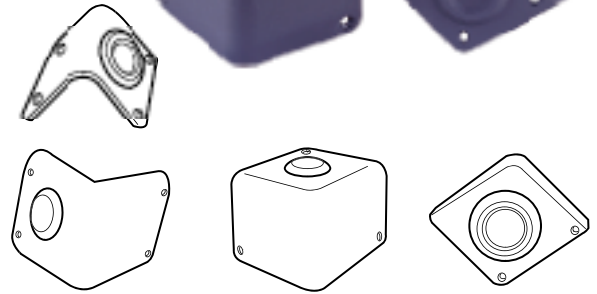
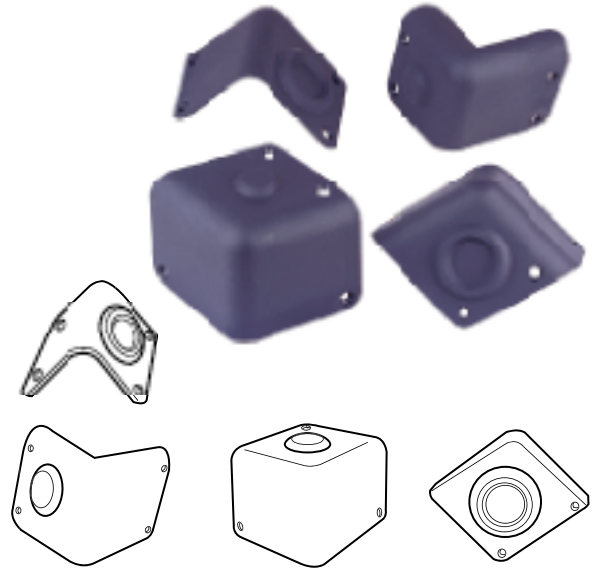
Model: CP-75105

Code No: 202-20158

Material: Plastic

Packaging: 4 pcs/per set

Weight: 16 kg/100 sets



## CH-2117A

Code No: 103-30140

Material: Die cast  
(Aluminium)

Finish: Matt black

Logo/Narreplate space:

114mmx19mmx1.8mm

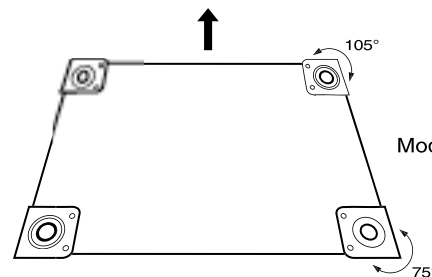
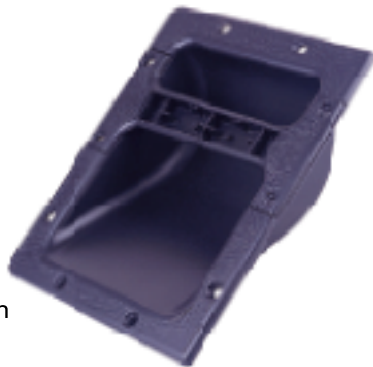
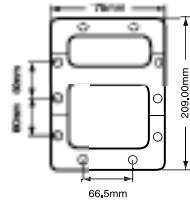
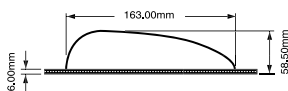
Packaging: 24 pcs/carton

Packing Dimension:

470mmx400mmx345mm

18.5inx15.8inx13.5in

Weight: 15 Kg/24 pcs



Model: CP-75105

## CH-2216S

Code No: 103-30152

Material: Steel

Finish: Matt black

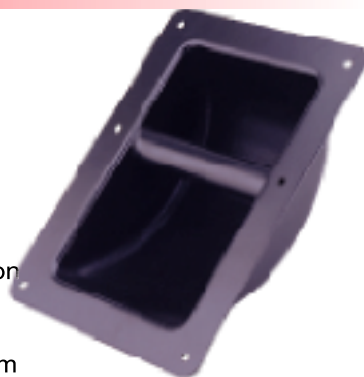
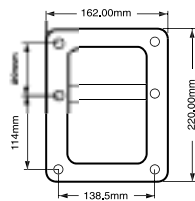
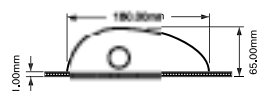
Packaging: 24 pcs/carton

Packing Dimension:

450mmx400mmx375mm

17.8inx15.8inx14.7in

Weight: 14 Kg/24 pcs



Model: CP-90

