



## Rugged Road Ready Features

- \* Industrial Grade Rubber Feet
- \* Premium 3/8" Vinyl Laminated Plywood
- \* Tongue and Groove Locking Fit
- \* Pick-&-Fit Foam

## Product Dimensions

Shipping Dimensions ( inch): 19.6 x 19.6 x 5.5

Shipping Weight ( lbs):12.3

Product Dimensions (inch): 19.1x 19.1 x 4.6

Product Weight (lbs): 11

Shipping Dimensions( cm):50 x 50 x 14

Shipping Weight ( kg): 5.6

Product Dimensions (cm):48.6 x 48.6 x 11.9

Product Weight (kg):5

# RRWIRELESS

Adjustable Case For Wireless  
Mics w/ Pick-&-Fit Foam



Your mic is your voice to the world. Protect it. Designed to house virtually any wireless unit out there including Sennheiser, AKG, Shure and Nady, RRWIRELESS is built to take care of all your wireless needs. Our exclusive high-density Pick-&-Fit Foam allows you to create the perfect custom space for any combination of handheld, headset, or lavalier wireless systems. Simply pick out the Pick-&-Fit Foam to customize your case for the perfect fit. If your needs change down the line, just change the foam inserts.

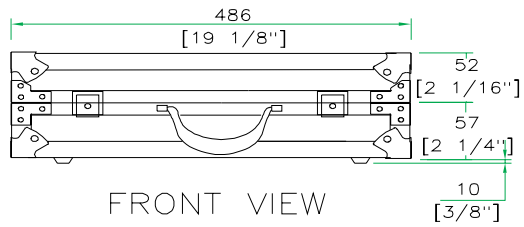
## Road Ready Cases

1226 Corral Place \* Santa Fe Springs, CA 90670

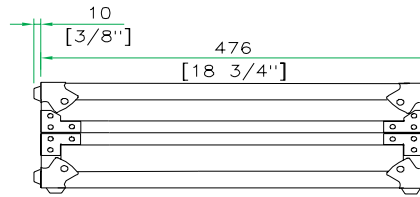
ph: 562.906.6185 \* fax: 562.906.6186

**WWW.ROADREADYCASES.COM**

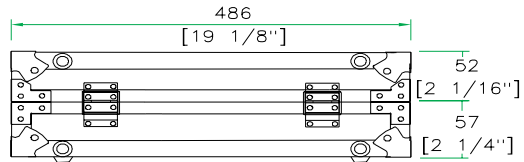
# RRWIRELESS



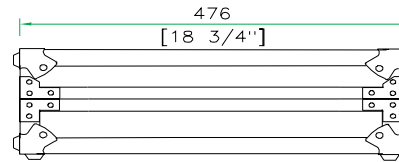
FRONT VIEW



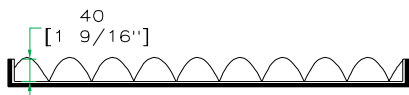
LEFT VIEW



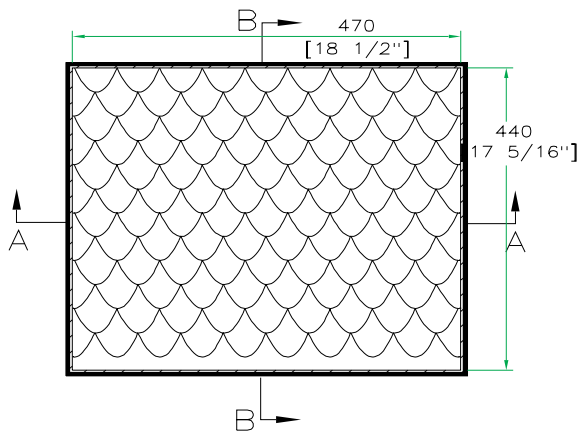
BACK VIEW



RIGHT VIEW



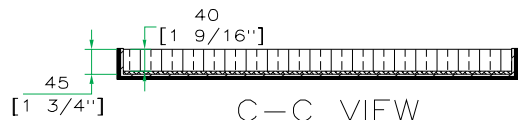
A-A VIEW



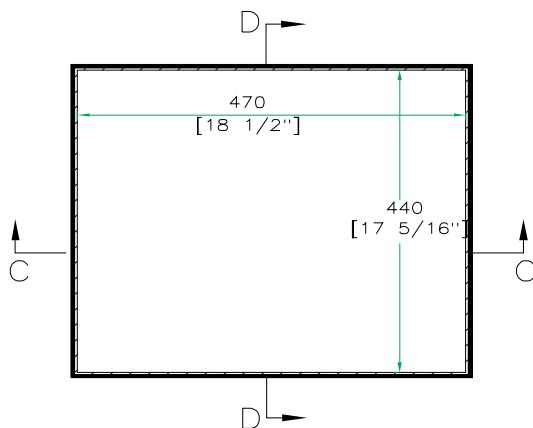
TOP VIEW OF COVER



B-B VIEW



C-C VIEW



TOP VIEW OF BASE



D-D VIEW