

Sonic Immersion  
**I** BEAM<sup>®</sup>  
Technologies, LLC



**Get Ready to Experience  
High Definition Bass.**



## Contents

Items you will need.....	4
Introduction & Precautions.....	5
Specifications.....	6
Home Theater Mounting .....	7 - 8
Home Theater System Connections .....	9 - 10
Automotive Mounting.....	11
Automotive System Connections.....	12
Troubleshooting .....	13
Warranty.....	14

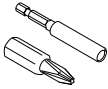
## Items you will need



Drill



Drill bit for pilot holes



Phillips head bit w/extension

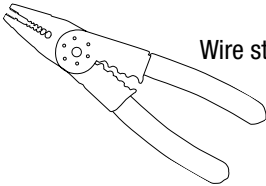
or



Phillips head screw driver



Spool of 12 or 14 gage speaker wire



Wire strippers ( 12 or 14 gage )

## Introduction and Precautions

### I BEAM® Install Guide

#### 1. Welcome

Thank you for purchasing the I BEAM VT300. It represents the new world standard in vibro tactile transducer performance. The I BEAM delivers powerful deep bass and accurate broadband sound output. Any sound or movie system will benefit from a properly installed I BEAM.

#### 2. I BEAM Introduction

The I BEAM produces sound through vibro tactile transfer instead of pressurizing the air around you. The traditional sub woofer makes sound by “pumping air” with large drivers in a big box.

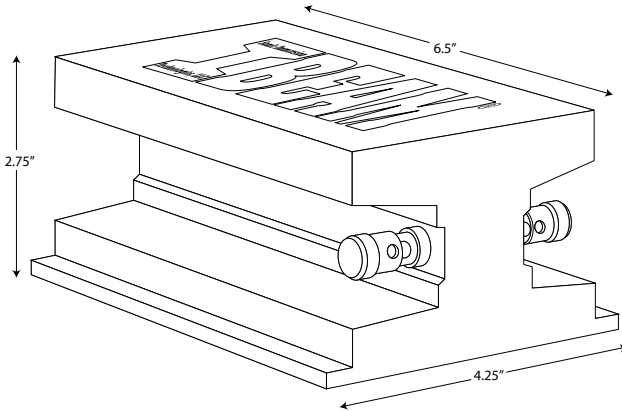
The I BEAM simulates the excitement of a high volume sound experience without distortion, noise pollution or ear damage. It literally injects balanced low frequency sound energy into your body. This energy is delivered so cleanly that the brain interprets the I BEAM as sound, not shaking. This is why the I BEAM experience is the new world standard in vibro tactile transducer performance. More information on the I BEAM can be found at [www.IBEAMBass.com](http://www.IBEAMBass.com). A technical review of the I BEAM design and a comparison of it's advantages over available technologies is available at [www.IBEAMBass.com/pdf/ibeam\\_white\\_paper.pdf](http://www.IBEAMBass.com/pdf/ibeam_white_paper.pdf)

#### 3. Precautions

The I BEAM is a powerful device that must be securely mounted before use! Before installing the I BEAM read all the instructions provided. Only persons qualified to perform A/V installations should attempt to install the I BEAM. If any unresolved questions remain after reading these instructions you can find more installation information on the Install FAQ'S page at [www.IBEAMBass.com](http://www.IBEAMBass.com). Contact us at [install@IBEAMBass.com](mailto:install@IBEAMBass.com) for any other questions. When in doubt do not install the I BEAM until comfortable with all procedures and methods necessary to complete the task.

The I BEAM contains a powerful magnetic motor. Never place tape media or a video monitors in direct proximity to any large magnet.

## Specifications



I BEAM® Model # .....	VT300
Size (L x W x H).....	6.5" x 4.25" x 2.75"
Weight.....	3.5 lbs (1.6 Kg)
Maximum Program Force.....	220 lbs (978 Newtons)
Force / Watt.....	2.2 lbs/Watt (9.7 Newtons/Watt)
Continuous Power Handling .....	100 Watts
Max Program Power .....	250 Watts
Overload Protection .....	PPTC self reset fuse
Impedance.....	4 ohms
Frequency Response.....	20Hz – 800Hz

## Recommended Amplifier Specifications

Any 4 ohm stable amplifier that provides a minimum of 100 Watts RMS is sufficient to power the I BEAM. Amplifiers 150 – 300 Watts @ 4 ohms offer the finest experience.

## Mounting Guidelines

In many installations the I BEAM can be mounted directly using the 10 built-in through holes. A universal mount bracket for the I BEAM SIT part number #UMP1496, is available when direct mounting is not an option.

### Home Theater Seat Mounting

The contemporary Home Theater Seat will generally accept a direct attachment of the I BEAM using the 10 built-in mounting holes. If your seat was not factory equipped with the I BEAM it is strongly suggest that you contact the manufacturer directly and obtain their recommendations for vibro-tactile product mounting.

- Carefully turn the seat upside down. Support it without the possibility of damage during the installation process. Always use caution when moving Home Theater Seating as these items can be heavy and somewhat awkward to maneuver. Get help if necessary.
- Find a location on the seat bottom that allows solid attachment to wood structural members. The ideal spot is toward the center and rear of the seat bottom. (If seat bottom mounting is not used choose a location on the seat frame near the rear and center.) Check for proper clearance from motors and seat adjustment mechanisms. Try to allow air space between the I BEAM and floor when mounted. Never use the I BEAM to support the seat.
- Drill pilot holes and secure the I BEAM in the desired location using the supplied screws. Check for free and complete seat motion. Find another location if the seat motion is impeded or if seat becomes difficult to move normally.

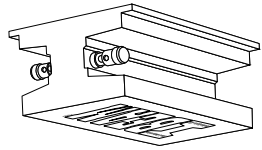
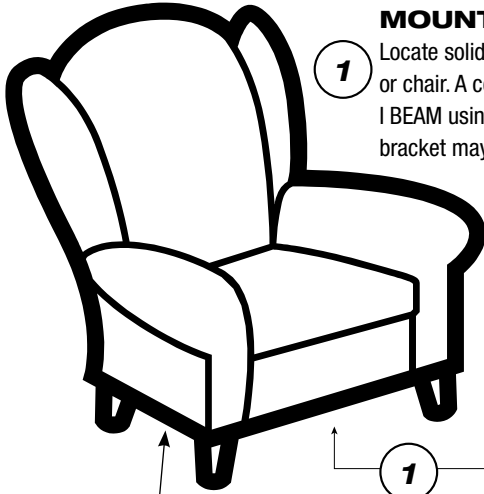
Secure the I BEAM using the screws in all 10 mounting flange holes.

## Home Theater Seat Mounting

### MOUNTING THE I BEAM

1

Locate solid wood or metal frame underneath couch or chair. A central location is preferred. Attach the I BEAM using 10 screws to the frame. A mounting bracket may be required for some furniture.



1

(screws)

Use all 10 screw holes when mounting long ways.

Structural support

**I BEAM**  
(Drill Template)

(screws)

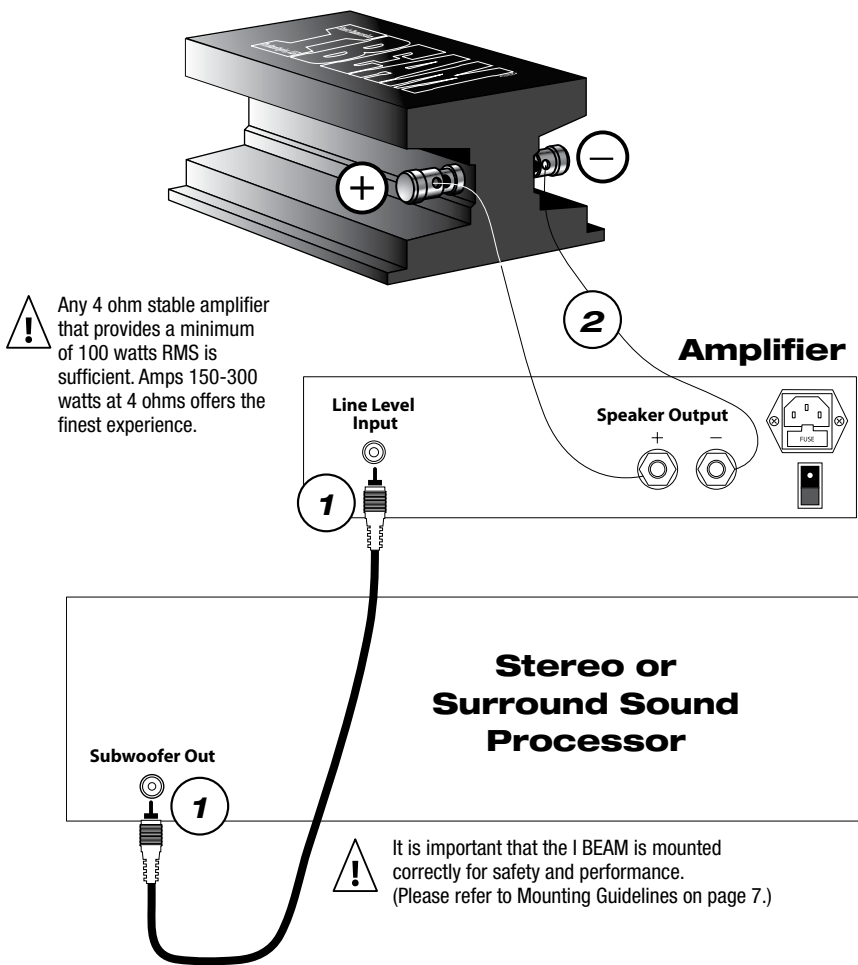
Minimum of 6 screws required for cross mounting.



Structural support

**I BEAM**  
(Drill Template)

## Home Theater Installation (Using Sub Woofer Output)



1

### Installing the Amplifier

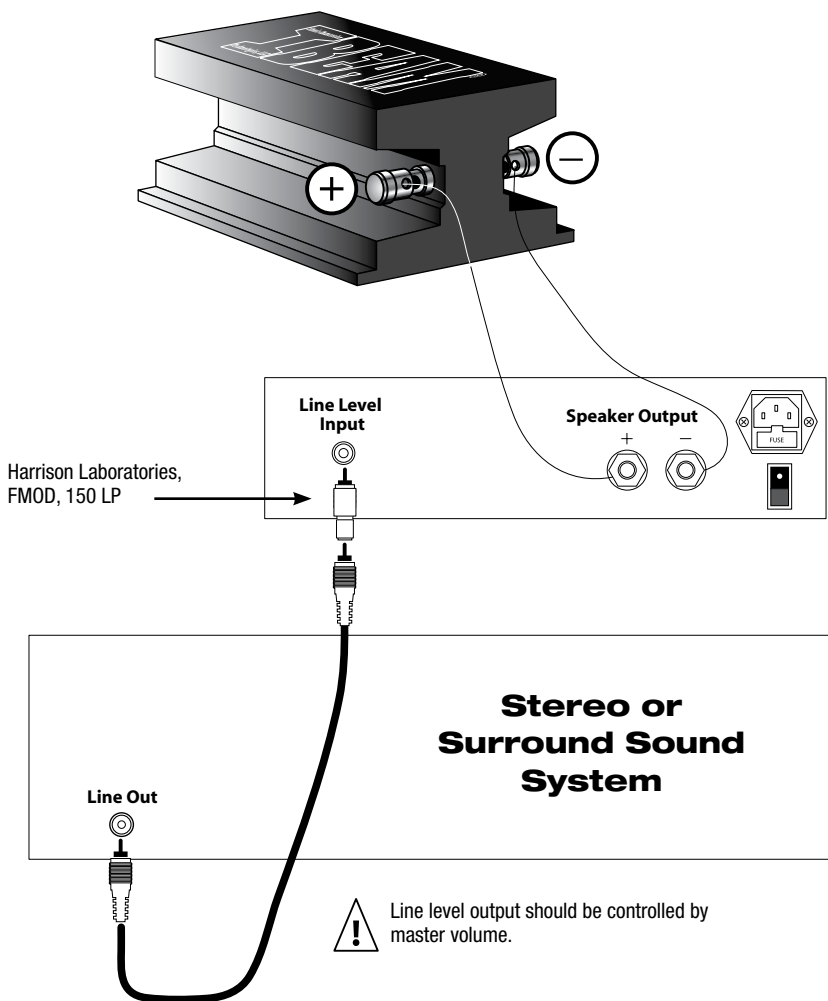
Using RCA cables, connect your sub woofer line out to the amplifier input. Also be sure your amplifier is plugged in and turned on.

2

### Connect to I BEAM

Attach 12 or 14 gauge speaker wire from the speaker output on your amplifier to the input terminals on the I BEAM.

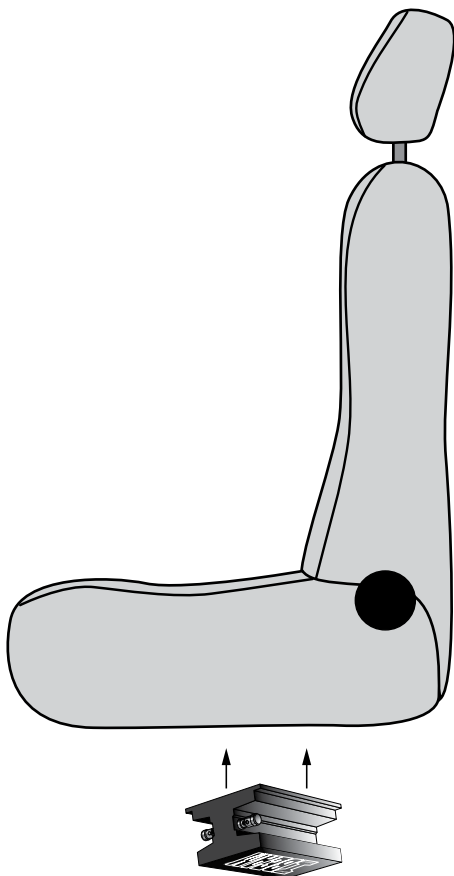
## Home Theater Installation (Without Sub Woofer Output)



### OPTIONAL CROSSOVER

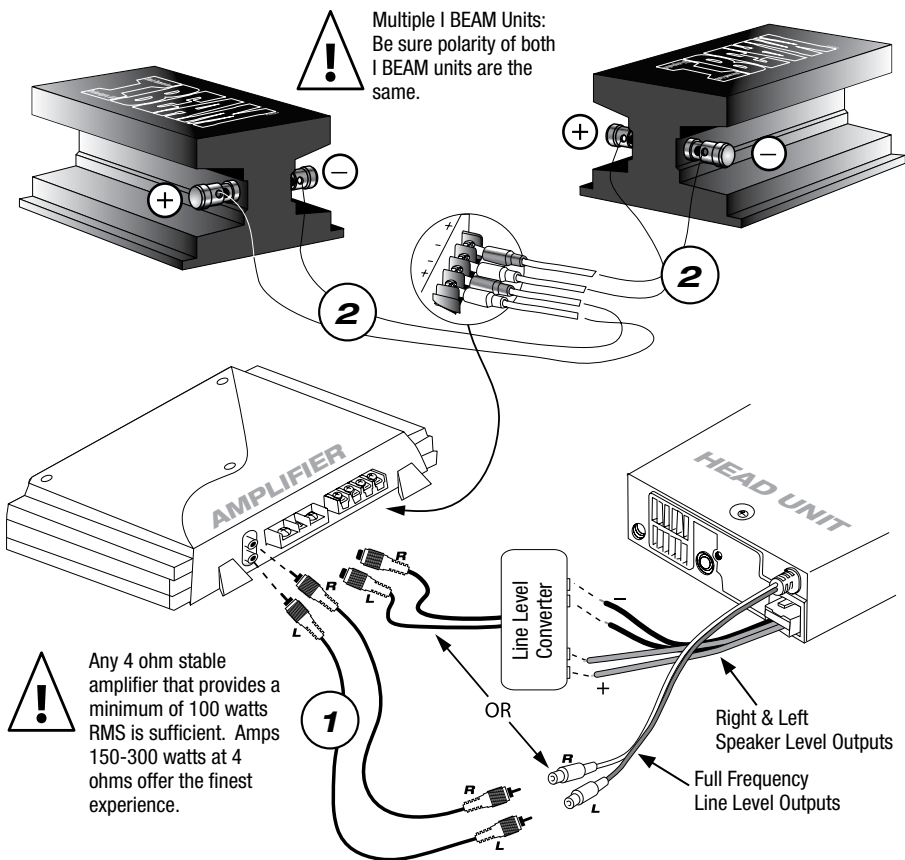
If your amplifier does not have a built-in crossover, this step may be necessary. The suggested crossover settings are 100-300hz.

## Car Installation



- Contact your automobile manufacturer for specific instructions to remove and reinstall your vehicle's seats.
- Professional Installation recommended for automobile installations, especially when airbags are present.
- A Universal Mounting bracket, part number UMP#1496, will most likely be required for car installations. Contact your local dealer, or SIT directly at [www.ibeamass.com](http://www.ibeamass.com).

## Car Installation



1

### Connect to Amplifier

Using RCA cables, connect your sub woofer line out to the amplifier input.

2

### Connect to I BEAM

Attach 12 or 14 gauge speaker wire from the speaker output on your amplifier to the input terminals on the I BEAM.

## Troubleshooting

<b>SYMPTOM</b>	<b>CAUSE</b>	<b>SOLUTION</b>	
I BEAM® stops operating	overload protection activated	allow fuse to reset (3-5min) lower amp settings	
I BEAM® sounds weak	low settings	increase the amp gain and/or raise source input level	
	little bass in source	many older recordings lack much deep bass sound	
No sound from I BEAM®	wires disconnected	check speaker level wiring	
	amp off	turn on amp	
	no line level signal to amp	check line level wiring and signal	
	internal damage to unit	contact SIT	
Sound has too much highs	crossover frequency set too high	lower crossover set point to 150Hz adjust lower as desired	
		no crossover	install in-line filter
Undesired vibrations	improper mounting	review mounting instructions and correct the mounting issues	
	non-home theater seating used	purchase dedicated seating	
	poor seat construction	isolate noise and dampen spot where seat is making sound	

## Warranty

### **Warranty**

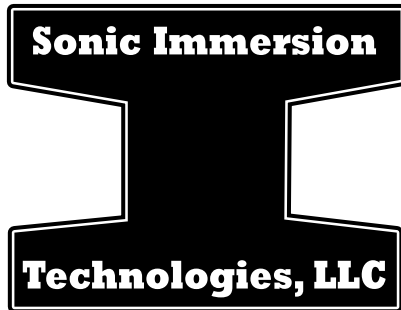
The I BEAM® is warranted for normal use against defect in manufacturing or materials for a period of one year from the date of purchase unless otherwise stated. During the warranty period Sonic Immersion Technologies (SIT) will repair or replace any non-functioning unit that has not: (1) been modified or altered, or (2) had serial number defaced or removed, or (3) had end caps removed, or (4) suffered fire, water or other catastrophic damage. Shipping costs are the responsibility of the purchaser. Contact SIT for a return authorization number and include a copy of the original invoice with shipment to validate warranty period.

### **Disclaimer**

SIT provides this manual and the I BEAM® “as is” without warranty of any kind, either express or implied, including but not limited to the implied warranties or conditions of merchantability or fitness for a particular purpose. In no event shall SIT, its directors, officers, employees or agents be liable for any indirect, special, incidental, or consequential damages (including damages for loss of profits, loss of business, loss of use or data, interruption of business and the like), even if SIT has been advised of the possibility of such damages arising from any defect or error in this manual or product.

No part of this manual, including the products described in it, may be reproduced, transmitted, transcribed, stored in a retrieval system, or translated into any language in any form or by any means, except documentation kept by the purchaser for backup purposes, without the express written permission of Sonic Immersion Technologies, LLC (“SIT”).





**[www.ibeambass.com](http://www.ibeambass.com)**  
email: [support@ibeambass.com](mailto:support@ibeambass.com)